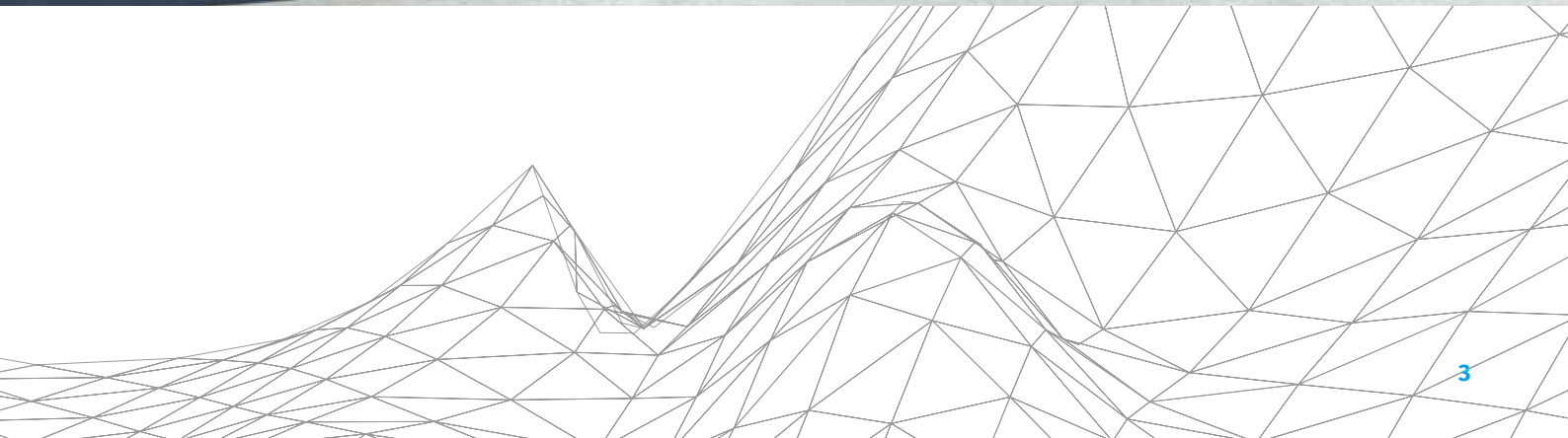




ipd was founded and originated in the dental sector, specializing in the manufacturing and marketing of PROSTHETIC ABUTMENTS for DENTAL IMPLANTS. Available in more than thirty countries, **ipd** offers a wide range of superior quality products, providing innovative solutions in the field of dental implants/prosthetics. **ipd** is now a global leader in compatible abutments.



Who we are


About us

Our products are manufactured utilizing advanced technology and adhering to the highest quality standards. This includes constant supervision of the exact geometric dimensions and hygiene requirements for the abutments. The components are manufactured under the strictest parameters and procedures established by our engineers in close collaboration with recognised professionals and dentists.

A little background information

We have been operating in Spain since 2004, offering the widest range of dental abutments compatible with the main implant brands. Our goal is to offer technically advanced products of the highest quality and provide the best solutions to our customers.

Quality assurance

At , the quality and excellence in our products is of highest priority.

We work with rigorous quality controls that allow us to offer functional, safe and quality products to meet the most demanding market expectations.

, its management system and its products comply with the applicable regulatory requirements:



- **Medical Device Manufacturing License**

Issued by the AEMPS (Spanish Agency of Medicinal Products and Medical Devices).



- **CE MARK**

All our products have the CE mark according to Regulation EU 2017/745.

Notified Body: IMQ ISTITUTO ITALIANO DEL MARCHIO DI QUALITÀ S.P.A. NB No. 0051.



- **MDSAP (Medical Device Single Audit Program)**

The Quality Management System complies with the requirements of ISO 13485:2016 and of the requirements of the following regulatory authorities: Australia, Brazil, Canada and United States.



- **FDA**

IPD is registered in the FDA's Establishment and Device Listing database, with Registration Number 3016954909.



- **Health Canada**

IPD has the Medical Device Establishment License from Health Canada, MDEL No. 18296.



- **ISO 13485:2016. Medical devices. Quality management systems.**

Requirements for regulatory Certificate No. 9124.IPDE. First Issuing on 27/10/2010.



- **ISO 9001:2015. Quality management systems. Requirements**

Certificate No. IT-96895.



Be Innovative

Custom Interface Ti-Base System

Flexibility made Ti-Base

The most flexible and versatile Ti-Base on the market

Choosing a suitable Ti-Base for each clinical case and restoration is essential for a long term success

Custom Interface Ti-Base system Get to know its innovative design

- + Asymmetrical **tri-lobe engaging** design.
- + **Easier to mill** geometry.
- + **Helical spiral** grooves for improved retention.
- + **Larger surface area for the prosthetic restoration** to avoid insufficient thickness depending on the materials used.
- + **Three different Ti-Base platforms:** Narrow, Regular, and Wide. The emergence profile will accordingly grow from implant to prosthetic restoration.
- + **Adjustable height:** With 8 mm as standard for the engaging versions and 6.5 mm for non-engaging.
- + **The recess for the Angled Screw Channel (ASC) can be adjusted** for both engaging and non-engaging. Check availability according to implant system.
- + **CAD-CAM** libraries are available for all possible variations.
- + Different **gingival heights** for up to 3.5 mm.
- + **Cutting guides** with fixing screw facilitate cutting and **trimming**



Be Precise

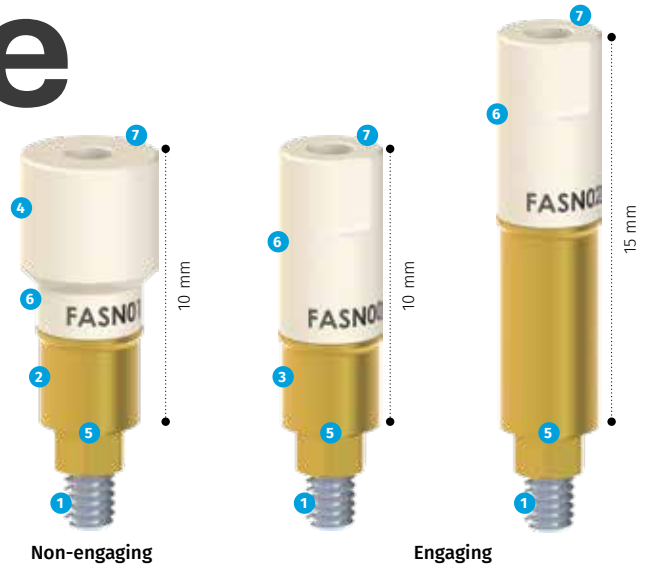
Scan Abutment

Accuracy, fit and reliability

One system, all solutions

Revolutionary high-precision Scan Abutment giving access to a fully integrated digital workflow.

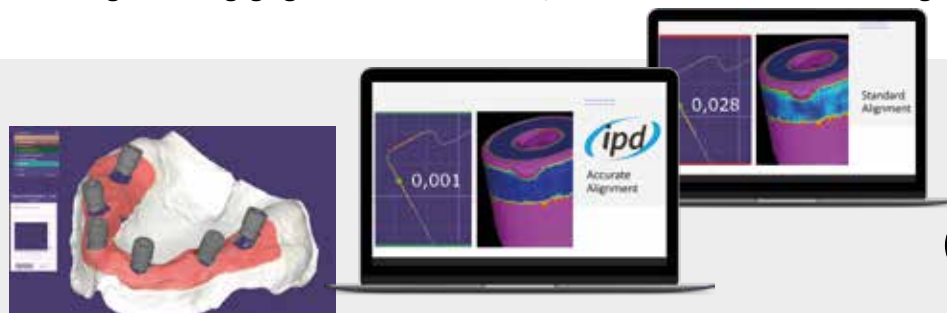
A Scan Abutment suitable for both intraoral and desktop scanning devices enabling to perform implant level frameworks as well as giving access to our Custom Interface Ti-Base System or the one-of-a-kind high precision 3D printed models.



Scan Abutment

- + Compatible with intraoral systems (clinical) and with desktop systems (laboratory).
- + Also compatible with the Renishaw® probe system.
- + It includes a captive screw to prevent loss and make it easier to mount.
- + The TiN coating offers antibacterial properties to protect the gingiva.
- + The Titanium connection ensures a long-lasting connection and enables the use of Rx.
- + The top section is made of PEEK, a polymer that favours implant reading and location.
- + Maximum Z-precision, as it rests on the sagittal plane of the implant or analog.
- + A tolerance of ± 5 microns throughout the entire manufacturing process.
- + Reference engraved by laser etching.
- + 2 heights for engaging: 10 mm for most cases, and 15 mm for situations involving a very deep implant.

- 1 Captive screw
- 2 TiN coating
- 3 Titanium connection
- 4 Head PEEK
- 5 Maximum Z-precision
- 6 Reference laser etched
- 7 2 heights for engaging versions



NOK. Best fit with wrong tolerance



OK. Best fit with optimal tolerance



Optimal Best-fit

CAD Alignment

Digital accuracy means being able to align two STL meshes as accurately as possible.

IPD is the only manufacturer that has taken into account the oversizing that occurs when scanning and has developed a universal tool to help solve it.

By providing the customer with an assortment of 7 different STL files for each IPD scan bodies enables the possibility to improve CAD alignment regardless of the scanning device used.

Scan Transfer

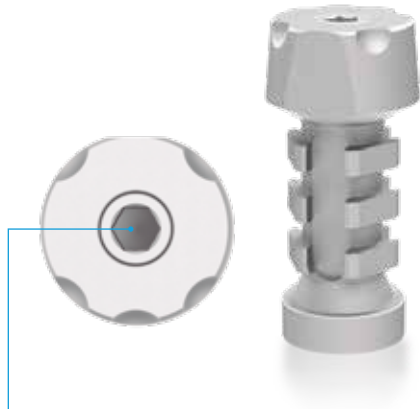
The dedicated abutment for a precise IO-based workflow for full arch treatments. Scan Transfer is the first abutment offering clinicians a reliable protocol to precisely restore the most demanding clinical cases.

Its design and geometry allow them to be splinted creating a guide for the scanning accuracy by reducing scan distortion and increasing consistency and repeatability.

Thanks to Scan Transfer the most demanding clinical cases can be fully restored with an IO scanning device achieving the desired passive fit.



Technical Specifications



TECHNICAL SPECIFICATIONS

- + Tapered design for easy axial scanning
- + 5 µm
- + Asymmetrical orientation cut-outs
- + Maximized scanning area
- + Retentive body that facilitates splinting

SPECIFIC LIBRARIES

- + Direct to implant library
- + Direct to implant library with ASC
- + Ti-Base level library
- + Ti-Base level library with ASC
- + Library for straight temporary abutment
- + Digital 3D Model

Verification Screw

Confirmation that the Scan Transfer is positioned correctly when the screw is flush with the top of the abutment.

Compatible with:



Digital Analog

The most stable and precise

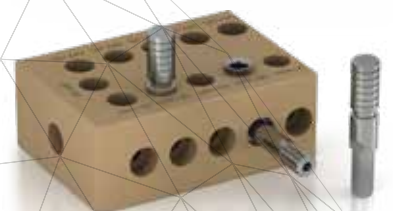
3D printing accuracy and reliability

The innovative design of the Digital Analog, with two fixation screws, ensures the exact positioning of the digital analog in a 3D printed model. The two fixation screws ensure that the analog is in the correct position, with one located laterally and the other positioned at the bottom of the 3D printed model. The lateral screw also allows the use of articulator without loss of the bite register.



Validation master

IPD provides a master STL file to allow final customer checking their printing device resolution. At the same time, a pretend 3D analog will be provided free of charge to allow testing the adjustment on the printed calibration master in a convenient, simple and fast way. Once acknowledge this value customer will have access to a customised CAD library with optimised parameter. There are existing up to 11 different CAD library files to ensure making it suitable to efficiently work with any 3D printing system.



Be Digital

CAD Solutions

For all the leading CAD software systems on the market.

Our aim is to simplify and improve the most your digital workflow by providing accurate solutions to your everyday digital challenges. We have developed and tested a full system to guarantee an accurate fully digital flow.

Scan Abutments Extra/Intra-Oral system is the definitive and most integrated solution on the market, allowing you to work with any type of CAD library, Ti-Bases, Direct to Implant (milled connection and sinter-milled connection), Digital Analog (3D printed model), Scan Transfer and more.



Ti-Base level full



Ti-Base level framework



Implant level sinter-milled connection



Implant level milled connection



Digital analog / 3D printed model

Implant Level Libraries

Library file that allows to freely design any framework type at implant level, with both straight and angled screw channel.



Ti-Base Level Libraries

Library file allowing the design of any type of prosthetic solution on top of the exclusive IPD Custom Ti-Base to produce cemented-screw retained restorations. It's a versatile solution for intended use with aesthetic raw materials offering the most appropriate final result for each clinical case thanks to its flexibility as well as all supported options. For example, the two adjustment tolerances: A tighter and a looser one to support from ceramic to sintered CoCr or PMMA frameworks for example.



3D digital model

Through intraoral or Desktop scanning will allow to create high precision 3D models simplifying and facilitating the whole clinical and lab protocol. The full system has been developed to provide a stable, accurate and cost-effective solution.



ModelPro is a dedicated CAD software to the design of 3D models, among many other options, offering in a single software the features of the main dental and mesh editing software's.

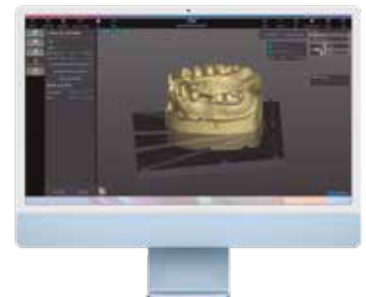
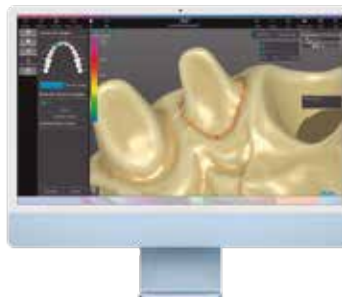
Cloud-based, it is the first CAD software that can run on both Windows and Mac OS®. The lack of a dongle allows unlimited installations, and the cloud-based environment offers free access via relevant credentials from anywhere, anytime. Exclusive for IPD customers it offers a top CAD software for designing 3D models completely free of charge.

Model Pro is also supporting unique features such as "Scan Abutment Replace", which allows switching to an IPD workflow from a third-party scan, or the exclusive "Stump Die 3D" system



*ModelPro is an IPD software submitted to medical devices compliance rules.
Check market availability with your IPD official dealer.

- + 3D Model
- + Automatic detection margin prep from CAD
- + Mesh edit, reparation and restoration
- + Scan Abutment alignment
- + Detachable dies
- + Stump Die 3D
- + 3D articulator
- + Digital analog
- + Detachable soft tissue
- + Scan Abutment Replace



Compatibilities






Compatibility

AB Serie MULTI-UNIT [ø4.8]




INTRA-ORAL / DESKTOP / CONTACT PROBE SCAN BODY

Platform	Height (mm)	
ø4.8	10.0	IPD/AB-SR-01

Captive screw included. 1.20 Hex Screwdriver.




SCAN TRANSFER


Platform	Height (mm)		Screw
ø4.8	0.5	IPD/AB-SR-11	IPD/AB-TR-11/C

IPD/AB-SR-11 includes screw and a protective cap



Ti-BASE

Platform	Post height (mm)	Gingival height	
ø4.8	3.5	0.5	-
		0.2	IPD/AB-IR-01/3D
	6.5	0.5	-
		0.2	IPD/AB-IR-03/3D

Please see page 47 for the  Custom Interface System® accessories.



SCREW / TPA SCREW FOR ANGLED PROSTHESIS

Platform	Screwdriver	Height	Reference	TiN Reference
ø4.8	Unigrip	-	IPD/AB-TR-00	IPD/AB-TR-00/TiN
	TPA	For 3.5 mm high Ti-Base	-	IPD/AB-TR-50
	TPA	For 6.5 mm high Ti-Base	-	IPD/AB-TR-51




ANALOG / DIGITAL ANALOG

Platform	Reference	Digital reference
ø4.8	IPD/AB-AR-00	IPD/AB-AR-00/3D
Bottom Screw	-	IPD/KA-TA-00
Side Screw	-	IPD/KA-TA-01



TEMPORARY ABUTMENT / OPEN TRAY COPING

Platform		Coping screw
ø4.8	IPD/AB-PR-00	IPD/AB-TR-00/C

The same abutment can be used as a temporary abutment with the occlusal screw or as an impression coping using the coping screw.



OPEN AND CLOSED TRAY COPING

Platform		Reference
ø4.8	Open tray coping	IPD/AB-CR-00
	Closed tray coping	IPD/AB-CR-01

Classic design.



HEALING ABUTMENT Titanium / Plastic POM

Platform	Material	Reference
ø4.8	Plastic POM	IPD/AB-DR-00
	Titanium	IPD/AB-DR-01

IPD/AB-TR-00 screw not included.



ANGLED MULTI-UNIT CARRIER

Platform	Reference
ø4.8	IPD/LL-TM-00



SCREWDRIVER

Lengths (mm)	Screwdriver	Reference
18	Unigrip	IPD/PU-00-18
25	Unigrip	IPD/PU-00-25
32	Unigrip	IPD/PU-00-32
20	2.0 Hex	Straight Multi-unit abutment IPD/LL-AB-00



PSD OVERDENTURE SYSTEM

	Reference	Digital Reference
Digital Analog		PS-AR-00/3D
Bottom screw		KA-TA-00
Carrier		KA-CL-14
Analog	PS-AR-00	





Compatibility



NOBEL BIO CARE®

AA Serie BRANEMARK SYSTEM®

[ϕ 3.5 / ϕ 4.1 / ϕ 5.1]





INTRA-ORAL / DESKTOP / CONTACT PROBE SCAN BODY

Platform	Height (mm)		
ϕ 3.5	10	IPD/AA-SN-00	IPD/AA-SN-01
	15	IPD/AA-SN-02	-
ϕ 4.1	10	IPD/AA-SR-00	IPD/AA-SR-01
	15	IPD/AA-SR-02	-
ϕ 5.1	10	IPD/AA-SW-00	IPD/AA-SW-01

Captive screw included. 1.20 Hex Screwdriver.



Ti-BASE 

Platform	Height (mm)		
ϕ 3.5	1.5	IPD/AA-IN-02/3D	IPD/AA-IN-03/3D
	0.5	IPD/AA-IR-00/3D	IPD/AA-IR-01/3D
ϕ 4.1	1.5	IPD/AA-IR-02/3D	IPD/AA-IR-03/3D
	2.5	IPD/AA-IR-04/3D	IPD/AA-IR-05/3D
ϕ 5.1	1.3	IPD/AA-IW-02/3D	IPD/AA-IW-03/3D

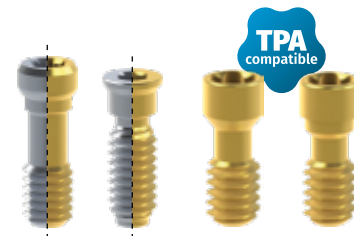
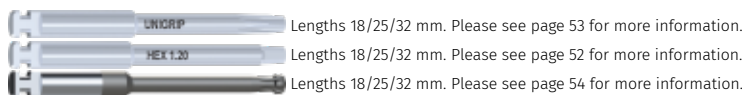
Please see page 47 for the  accessories.



SCREW / TPA SCREW FOR ANGLED PROSTHESIS

Platform	Screwdriver	Seat	Reference	TiN Reference
ϕ 3.5	Unigrip	Conical	IPD/AA-TN-00	IPD/AA-TN-00/TIN
	Unigrip	Conical	IPD/AA-TR-00	IPD/AA-TR-00/TIN
ϕ 4.1	Unigrip	Flat	IPD/AA-TR-02	IPD/AA-TR-02/TIN
	1.20 Hex	Low profile conical	IPD/AA-TR-01	IPD/AA-TR-01/TIN
ϕ 5.1	Unigrip	Conical	IPD/AA-TW-00	IPD/AA-TW-00/TIN
			IPD/AA-TW-01	IPD/AA-TW-01/TIN
ϕ 3.5	TPA	Conical	-	IPD/AA-TN-50
ϕ 4.1	TPA	Conical	-	IPD/AA-TR-50
ϕ 5.1	TPA	Flat	-	IPD/AA-TR-52
		Conical	-	IPD/AA-TW-50

The IPD/AA-TW-01 screw is compatible with the Ti-Bases IPD/AA-IW-02/3D and IPD/AA-IW-03/3D





ANALOG / DIGITAL ANALOG

Platform	Reference	Digital Reference
ø3.5	IPD/AA-AN-00	IPD/AA-AN-00/3D
ø4.1	IPD/AA-AR-00	IPD/AA-AR-00/3D
ø5.1	IPD/AA-AW-00	IPD/AA-AW-00/3D
Bottom Screw	-	IPD/KA-TA-00
Side screw	-	IPD/KA-TA-01



TEMPORARY ABUTMENT / OPEN TRAY COPING

Platform			Coping screw
ø3.5	IPD/AA-PN-06	IPD/AA-PN-07	IPD/AA-TN-00/C
ø4.1	IPD/AA-PR-06	IPD/AA-PR-07	IPD/AA-TR-00/C
ø5.1	IPD/AA-PW-06	IPD/AA-PW-07	IPD/AA-TW-00/C

The same abutment can be used as a temporary abutment with the occlusal screw or as an impression coping using the coping screw.

For references IPD/AA-PW-06 and IPD/AA-PW-07 use the screw IPD/AA-TW-01 if it is used as a temporary.



HEALING ABUTMENT

Platform	Height (mm)	Reference
ø3.5	2.0	IPD/AA-DN-02
	3.0	IPD/AA-DN-03
	4.0	IPD/AA-DN-04
ø4.1	2.0	IPD/AA-DR-02
	3.0	IPD/AA-DR-03
	4.0	IPD/AA-DR-04
	5.0	IPD/AA-DR-05
	2.0	IPD/AA-DW-02
ø5.1	3.0	IPD/AA-DW-03
	4.0	IPD/AA-DW-04



STRAIGHT ABUTMENT

Platform	Height (mm)	Angulation		
ø4.1		Straight	IPD/AA-PR-00	IPD/AA-PR-01

Using the low profile IPD/AA-TR-01 screw for IPD/AA-PR-03 is recommended.



PSD OVERDENTURE SYSTEM

	Reference	Digital Reference
Digital Analog		PS-AR-00/3D
Bottom screw		KA-TA-00
Carrier		KA-CL-14
Analog	PS-AR-00	



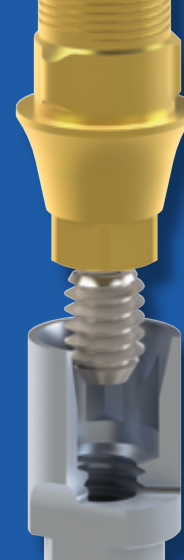


Compatibility



NOBEL BIOCARE®

AD Serie NOBEL ACTIVE®

[ϕ 3.0 / ϕ 3.5 / ϕ 4.3]





INTRA-ORAL / DESKTOP / CONTACT PROBE SCAN BODY

Platform	Height (mm)		
ϕ 3.0	10	IPD/AD-ST-00	IPD/AD-ST-01
	15	IPD/AD-ST-02	-
ϕ 3.5	10	IPD/AD-SN-00	IPD/AD-SN-01
	15	IPD/AD-SN-02	-
ϕ 4.3	10	IPD/AD-SR-00	IPD/AD-SR-01
	15	IPD/AD-SR-02	-

Captive screw included. 1.20 Hex Screwdriver.



Ti-BASE 

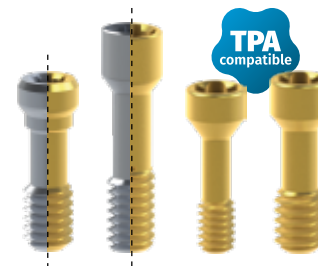
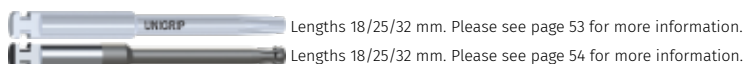
Platform	Height (mm)		
ϕ 3.0	0.8	IPD/AD-IT-00/3D	IPD/AD-IT-01/3D
	1.5	IPD/AD-IT-02/3D	IPD/AD-IT-03/3D
	2.5	IPD/AD-IT-04/3D	IPD/AD-IT-05/3D
ϕ 3.5	0.5	IPD/AD-IN-00/3D	IPD/AD-IN-01/3D
	1.5	IPD/AD-IN-02/3D	IPD/AD-IN-03/3D
	2.5	IPD/AD-IN-04/3D	IPD/AD-IN-05/3D
ϕ 4.3	0.5	IPD/AD-IR-00/3D	IPD/AD-IR-01/3D
	1.5	IPD/AD-IR-02/3D	IPD/AD-IR-03/3D
	2.5	IPD/AD-IR-04/3D	IPD/AD-IR-05/3D

High version of the non-engaging Custom Ti-Base subject to availability. Please see page 47 for the  accessories.



SCREW / TPA SCREW FOR ANGLED PROSTHESIS

Platform	Screwdriver	Seat	Reference	TiN Reference
ϕ 3.0	Unigrip	Conical	IPD/AD-TT-00	IPD/AD-TT-00/TIN
ϕ 3.5	Unigrip	Conical	IPD/AA-TN-00	IPD/AA-TN-00/TIN
ϕ 4.3	Unigrip	Conical	IPD/AA-TR-00	IPD/AA-TR-00/TIN
ϕ 3.0	TPA	Conical	-	IPD/AD-TT-50
ϕ 3.5	TPA	Conical	-	IPD/AA-TN-50
ϕ 4.3	TPA	Conical	-	IPD/AD-TR-50





ANALOG / DIGITAL ANALOG

Platform	Reference	Digital reference
ø3.0	IPD/AD-AT-00	IPD/AD-AT-00/3D
ø3.5	IPD/AD-AN-00	IPD/AD-AN-00/3D
ø4.3	IPD/AD-AR-00	IPD/AD-AR-00/3D
Bottom Screw	-	IPD/KA-TA-00
Side Screw	-	IPD/KA-TA-01



TEMPORARY ABUTMENT / OPEN TRAY COPING

Platform			Coping screw
ø3.0	IPD/AD-PT-06	IPD/AD-PT-07	IPD/AD-TT-00/C
ø3.5	IPD/AD-PN-06	IPD/AD-PN-07	IPD/AD-TN-00/C
ø4.3	IPD/AD-PR-06	IPD/AD-PR-07	IPD/AD-TR-00/C

The same abutment can be used as a temporary abutment with the occlusal screw or as an impression coping using the coping screw.



OPEN TRAY COPING

Platform	Reference
ø3.0	IPD/AD-CT-00

Classic design.



HEALING ABUTMENT

Platform	Height (mm)	Reference
ø3.0	3.0	IPD/AD-DT-03
	5.0	IPD/AD-DT-05
	7.0	IPD/AD-DT-07
ø3.5	Sealing cap	IPD/AD-DN-00
	1.5	IPD/AD-DN-01
	3.0	IPD/AD-DN-03
	5.0	IPD/AD-DN-05
	3.0 wide	IPD/AD-DN-13
	5.0 wide	IPD/AD-DN-15
	Sealing cap	IPD/AD-DR-00
ø4.3	1.5	IPD/AD-DR-01
	3.0	IPD/AD-DR-03
	5.0	IPD/AD-DR-05



PSD OVERDENTURE SYSTEM

	Reference	Digital Reference
Digital Analog		PS-AR-00/3D
Bottom screw		KA-TA-00
Carrier		KA-CL-14
Analog	PS-AR-00	





Compatibility

STRAUMANN®

DA Serie TISSUE LEVEL

[ϕ 4.8 RN / ϕ 6.5 WN]



INTRA-ORAL / DESKTOP / CONTACT PROBE SCAN BODY

Platform	Height (mm)		
ϕ 4.8 RN	10	IPD/DA-SR-00	IPD/DA-SR-01
	15	IPD/DA-SR-02	-
ϕ 6.5 WN	10	IPD/DA-SW-00	IPD/DA-SW-01

Captive screw included. 1.20 Hex Screwdriver.



Ti-BASE Custom Interface System®

Platform	Height (mm)		
ϕ 4.8 RN	0.4	IPD/DA-IR-00/3D	IPD/DA-IR-01/3D
ϕ 6.5 WN	0.4	IPD/DA-IW-02/3D	IPD/DA-IW-03/3D

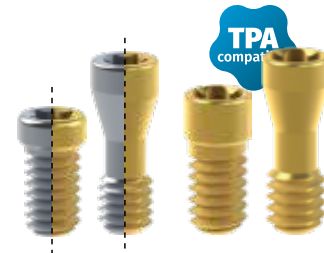
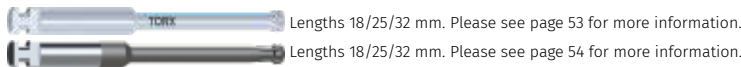
Please see page 47 for the Custom Interface System® accessories.



SCREW / TPA SCREW FOR ANGLED PROSTHESIS

Platform	Screwdriver	Seat	Reference	TiN Reference
ϕ 4.8 RN ϕ 6.5 WN Implant level	Torx	Conical	IPD/DA-TR-01	IPD/DA-TR-01/TiN
	Torx	Flat	IPD/DA-TR-02	-
	Torx	Conical	IPD/DA-TR-03	IPD/DA-TR-03/TiN
ϕ 4.8 RN synOcta®	Torx	Conical	IPD/DA-TR-00	IPD/DA-TR-00/TiN
ϕ 4.8 RN ϕ 6.5 WN	TPA	Conical synOcta®	-	IPD/DA-TR-50
		Implant level conical	-	IPD/DA-TR-51

The IPD/DA-TR-03 screw has the same measurements as the original direct implant screw.
IPD/DA-TR-01 screw is a narrower headed screw to be used on Custom Interface System®



ANALOG / DIGITAL ANALOG

Platform	Reference	Digital reference
ϕ 4.8 RN	IPD/DA-AR-00	IPD/DA-AR-00/3D
	synOcta® IPD/DA-AR-01	-
ϕ 6.5 WN	IPD/DA-AW-00	IPD/DA-AW-00/3D
Bottom Screw	-	IPD/KA-TA-00
Side Screw	-	IPD/KA-TA-01





HEALING ABUTMENT

Platform	Height (mm)	Reference
ø4.8 RN	0.0 Sealing cap	IPD/DA-DR-00
	1.5	IPD/DA-DR-01
	3.0	IPD/DA-DR-03
	4.5	IPD/DA-DR-04



TEMPORARY ABUTMENT / OPEN TRAY COPING

Platform			Coping screw
ø4.8 RN	IPD/DA-PR-06	IPD/DA-PR-07	IPD/DA-TR-01/C
	synOcta® IPD/DA-PR-09	IPD/DA-PR-08	IPD/DA-TR-00/C
ø6.5 WN	IPD/DA-PW-06	IPD/DA-PW-07	IPD/DA-TR-01/C

The same abutment can be used as a temporary abutment with the occlusal screw or as an impression coping using the coping screw.



STRAIGHT ABUTMENT SynOcta® and Straight

Platform	Reference
ø4.8 RN	synOcta® IPD/DA-PR-00
	IPD/DA-PR-01
ø6.5 WN	IPD/DA-PW-00



PSD OVERDENTURE SYSTEM

	Reference	Digital Reference
Digital Analog		PS-AR-00/3D
Bottom screw		KA-TA-00
Carrier		KA-CL-14
Analog	PS-AR-00	





Compatibility



STRAUMANN®

DB Serie BONE LEVEL

[ϕ 3.3 NC / ϕ 4.1 RC]




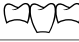
INTRA-ORAL / DESKTOP / CONTACT PROBE SCAN BODY

Platform	Height (mm)		
ϕ 3.3 NC	10	IPD/DB-SN-00	IPD/DB-SN-01
	15	IPD/DB-SN-02	-
ϕ 4.1 RC	10	IPD/DB-SR-00	IPD/DB-SR-01
	15	IPD/DB-SR-02	-

Captive screw included. 1.20 Hex Screwdriver.



Ti-BASE Custom Interface System®

Platform	Height (mm)			
ϕ 3.3 NC	0.5	IPD/DB-IN-00/3D	IPD/DB-IN-01/3D	
	1.5	IPD/DB-IN-02/3D	IPD/DB-IN-03/3D	
	2.5	IPD/DB-IN-04/3D	IPD/DB-IN-05/3D	
	3.5	IPD/DB-IN-06/3D	IPD/DB-IN-07/3D	
	ϕ 4.1 RC	0.5	IPD/DB-IR-00/3D	IPD/DB-IR-01/3D
		1.5	IPD/DB-IR-02/3D	IPD/DB-IR-03/3D
2.5		IPD/DB-IR-04/3D	IPD/DB-IR-05/3D	
	3.5	IPD/DB-IR-06/3D	IPD/DB-IR-07/3D	

Please see page 47 for the  Custom Interface System® accessories.



SCREW / TPA SCREW FOR ANGLED PROSTHESIS

Platform	Screwdriver	Seat	Reference	TiN Reference
ϕ 3.3 NC ϕ 4.1 RC	Torx	Conical	IPD/DB-TR-00	IPD/DB-TR-00/TiN
	TPA	Conical	-	IPD/DB-TR-50





ANALOG / DIGITAL ANALOG

Platform	Reference	Digital reference
ø3.3 NC	IPD/DB-AN-00	IPD/DB-AN-00/3D
ø4.1 RC	IPD/DB-AR-00	IPD/DB-AR-00/3D
Bottom Screw	-	IPD/KA-TA-00
Side Screw	-	IPD/KA-TA-01



TEMPORARY ABUTMENT / OPEN TRAY COPING

Platform			Coping screw
ø3.3 NC	IPD/DB-PN-06	IPD/DB-PN-07	IPD/DB-TR-00/C
ø4.1 RC	IPD/DB-PR-06	IPD/DB-PR-07	IPD/DB-TR-00/C

The same abutment can be used as a temporary abutment with the occlusal screw or as an impression coping using the coping screw.



HEALING ABUTMENT

Platform	Height (mm)	Reference
ø3.3 NC	2.0	IPD/DB-DN-02
	3.5	IPD/DB-DN-03
	5.0	IPD/DB-DN-05
ø4.1 RC	2.0	IPD/DB-DR-02
	4.0	IPD/DB-DR-04
	6.0	IPD/DB-DR-06



STRAIGHT ABUTMENT

Platform	Reference
ø4.1 RC	IPD/DB-PR-00



PSD OVERDENTURE SYSTEM

	Reference	Digital Reference
Digital Analog		PS-AR-00/3D
Bottom screw		KA-TA-00
Carrier		KA-CL-14
Analog	PS-AR-00	





Compatibility



ZIMMER®

FA Serie SCREW VENT®

[ϕ 3.5 / ϕ 4.5 / ϕ 5.7]





INTRA-ORAL / DESKTOP / CONTACT PROBE SCAN BODY

Platform	Height (mm)		
ϕ 3.5	10	IPD/FA-SN-00	IPD/FA-SN-01
	15	IPD/FA-SN-02	-
ϕ 4.5	10	IPD/FA-SR-00	IPD/FA-SR-01
	15	IPD/FA-SR-02	-
ϕ 5.7	10	IPD/FA-SW-00	IPD/FA-SW-01
	15	IPD/FA-SW-02	-



Captive screw included. 1.20 Hex Screwdriver.

Ti-BASE 

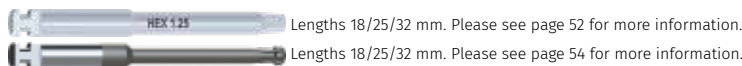
Platform	Height (mm)		
ϕ 3.5	0.5	IPD/FA-IN-00/3D	IPD/FA-IN-01/3D
	1.5	IPD/FA-IN-02/3D	IPD/FA-IN-03/3D
	2.5	IPD/FA-IN-04/3D	IPD/FA-IN-05/3D
ϕ 4.5	0.5	IPD/FA-IR-00/3D	IPD/FA-IR-01/3D
	1.5	IPD/FA-IR-02/3D	IPD/FA-IR-03/3D
	2.5	IPD/FA-IR-04/3D	IPD/FA-IR-05/3D
ϕ 5.7	0.5	IPD/FA-IW-00/3D	IPD/FA-IW-01/3D



Please see page 47 for the  accessories.

SCREW / TPA SCREW FOR ANGLED PROSTHESIS

Platform	Screwdriver	Seat	Reference	TiN Reference
ϕ 3.5 ϕ 4.5 ϕ 5.7	1.25 Hex	Conical	IPD/FA-TR-00	IPD/FA-TR-00/TIN
ϕ 3.5 ϕ 4.5 ϕ 5.7	TPA	Conical	-	IPD/FA-TR-50





ANALOG / DIGITAL ANALOG

Platform	Reference	Digital reference
ϕ 3.5	IPD/FA-AN-00	IPD/FA-AN-00/3D
ϕ 4.5	IPD/FA-AR-00	IPD/FA-AR-00/3D
ϕ 5.7	IPD/FA-AW-00	IPD/FA-AW-00/3D
Bottom Screw	-	IPD/KA-TA-00
Side Screw	-	IPD/KA-TA-01



TEMPORARY ABUTMENT / OPEN TRAY COPING

Platform			Coping screw
ø3.5	IPD/FA-PN-06	IPD/FA-PN-07	
ø4.5	IPD/FA-PR-06	IPD/FA-PR-07	IPD/FA-TR-00/C
ø5.7	IPD/FA-PW-06	IPD/FA-PW-07	

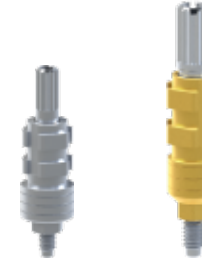
The same abutment can be used as a temporary abutment with the occlusal screw or as an impression coping using the coping screw.



OPEN TRAY COPING

Platform		Reference
ø3.5	Open tray coping	IPD/FA-CN-00
ø5.7	Open tray coping	IPD/FA-CW-00

Classic design.



HEALING ABUTMENT

Platform	Height (mm)	Reference
ø3.5	1.5	IPD/FA-DN-01
	3.0	IPD/FA-DN-03
	5.0	IPD/FA-DN-05
ø4.5	1.5	IPD/FA-DR-01
	3.0	IPD/FA-DR-03
	5.0	IPD/FA-DR-05
ø5.7	3.0	IPD/FA-DW-03
	5.0	IPD/FA-DW-05



STRAIGHT ABUTMENT

Platform	Height (mm)	Angulation	Reference
ø3.5	1.0	Straight	IPD/FA-PN-00
	2.0	Straight	IPD/FA-PN-01



PSD OVERDENTURE SYSTEM

	Reference	Digital Reference
Digital Analog		PS-AR-00/3D
Bottom screw		KA-TA-00
Carrier		KA-CL-14
Analog	PS-AR-00	







Compatibility

NEODENT[®]

RB Serie GRAND MORSE™ GM
[GM]





INTRA-ORAL / DESKTOP / CONTACT PROBE SCAN BODY

Platform	Height (mm)		
GM	10	IPD/RB-SR-00	IPD/RB-SR-01
	15	IPD/RB-SR-02	-

Captive screw included. 1.20 Hex Screwdriver.



Ti-BASE 


Platform	Height (mm)		
GM	1.0	IPD/RB-IR-00/3D	IPD/RB-IR-01/3D
	2.0	IPD/RB-IR-02/3D	IPD/RB-IR-03/3D
	3.0	IPD/RB-IR-04/3D	IPD/RB-IR-05/3D
	4.0	IPD/RB-IR-06/3D	IPD/RB-IR-07/3D


Please see page 47 for the  accessories.



SCREW / TPA SCREW FOR ANGLED PROSTHESIS

Platform	Screwdriver	Seat	Reference	TiN Reference
GM	Neo GM	Conical	IPD/RB-TR-00	IPD/RB-TR-00/TiN
	TPA	Conical	-	IPD/RB-TR-50

 Lengths 18/25/32 mm. Please see page 53 for more information.

 Lengths 18/25/32 mm. Please see page 54 for more information.





ANALOG / DIGITAL ANALOG

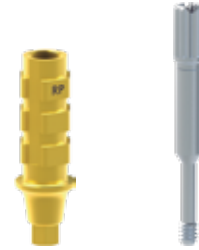
Platform	Reference	Digital reference
GM	IPD/RB-AR-00	IPD/RB-AR-00/3D
Bottom Screw	-	IPD/KA-TA-00
Side Screw	-	IPD/KA-TA-01



TEMPORARY ABUTMENT / OPEN TRAY COPING

Platform			Coping screw
GM	IPD/RB-PR-06	IPD/RB-PR-07	IPD/RB-TR-00/C

The same abutment can be used as a temporary abutment with the occlusal screw or as an impression coping using the coping screw.



HEALING ABUTMENT

Platform	Height (mm)	Reference
GM	1.5	IPD/RB-DR-01
	3.0	IPD/RB-DR-03
	5.0	IPD/RB-DR-05
	7.0	IPD/RB-DR-07



PSD OVERDENTURE SYSTEM

	Reference	Digital Reference
Digital Analog		PS-AR-00/3D
Bottom screw		KA-TA-00
Carrier		KA-CL-14
Analog	PS-AR-00	



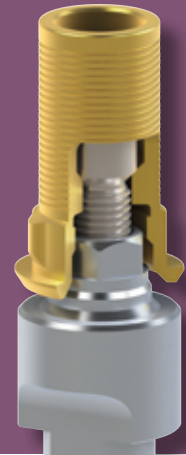


Compatibility

NEODENT®

RC Serie GM ABUTMENT

[RP]



INTRA-ORAL / DESKTOP / CONTACT PROBE SCAN BODY

Platform	Height (mm)	
RP	10	IPD/RC-SR-00

Captive screw included. 1.20 Hex Screwdriver.



Ti-BASE



Platform	Height (mm)	
RP	0.5	IPD/RC-IR-00/3D

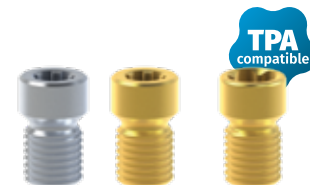
Please see page 47 for the  Custom Interface System® accessories.
Use wide platform cutting guides.



SCREW / TPA SCREW FOR ANGLED PROSTHESIS

Platform	Screwdriver	Seat	Reference	TiN Reference
RP	Neo GM	Flat	IPD/RC-TR-00	IPD/RC-TR-00/TIN
	TPA	Flat	-	IPD/RC-TR-50

 Lengths 18/25/32 mm. Please see page 53 for more information.
 Lengths 18/25/32 mm. Please see page 54 for more information.



ANALOG / DIGITAL ANALOG

Platform	Reference	Digital reference
RP	IPD/RC-AR-00	IPD/RC-AR-00/3D
Bottom Screw	-	IPD/KA-TA-00
Side Screw	-	IPD/KA-TA-01



TEMPORARY ABUTMENT / OPEN TRAY COPING

Platform		Coping screw
RP	IPD/RC-PR-06	IPD/RC-TR-00/C

The same abutment can be used as a temporary abutment with the occlusal screw or as an impression coping using the coping screw.



HEALING ABUTMENT

Platform	Height (mm)	Reference
RP	4.75	IPD/RC-DR-03



PSD OVERDENTURE SYSTEM

	Reference	Digital Reference
Digital Analog		PS-AR-00/3D
Bottom screw		KA-TA-00
Carrier		KA-CL-14
Analog	PS-AR-00	





Compatibility



NEODENT®

RD Serie GM MICRO ABUTMENT

[ø3.5]





INTRA-ORAL / DESKTOP / CONTACT PROBE SCAN BODY

Platform	Height (mm)		
ø3.5	10	IPD/RD-SN-00	IPD/RD-SN-01

Captive screw included. 1.20 Hex Screwdriver.



Ti-BASE 

Platform	Height (mm)		
ø3.5	0.3	-	IPD/RD-IN-01/3D
	0.5	IPD/RD-IN-00/3D	-

Please see page 47 for the  accessories.

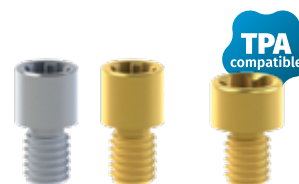


SCREW / TPA SCREW FOR ANGLED PROSTHESIS

Platform	Screwdriver	Seat	Reference	TiN Reference
ø3.5	Neo GM	Conical	IPD/RD-TN-00	IPD/RD-TN-00/TiN
	TPA	Conical	-	IPD/RD-TN-50

 Lengths 18/25/32 mm. Please see page 53 for more information.

 Lengths 18/25/32 mm. Please see page 54 for more information.



ANALOG / DIGITAL ANALOG

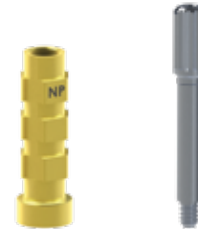
Platform	Reference	Digital reference
ø3.5	IPD/RD-AN-00	IPD/RD-AN-00/3D
Bottom Screw	-	IPD/KA-TA-00
Side Screw	-	IPD/KA-TA-01



TEMPORARY ABUTMENT / OPEN TRAY COPING

Platform			Coping screw
ø3.5	IPD/RD-PN-06	IPD/RD-PN-07	IPD/RD-TN-00/C

The same abutment can be used as a temporary abutment with the occlusal screw or as an impression coping using the coping screw.



HEALING ABUTMENT

Platform	Height (mm)	Reference
ø3.5	3.25	IPD/RD-DN-03



PSD OVERDENTURE SYSTEM

	Reference	Digital Reference
Digital Analog		PS-AR-00/3D
Bottom screw		KA-TA-00
Carrier		KA-CL-14
Analog	PS-AR-00	



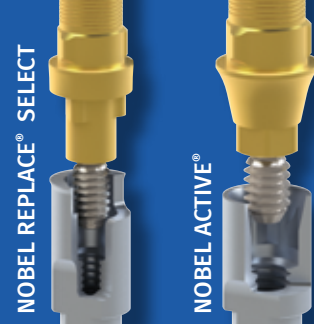
Analogs





Compatibility

NOBEL BIO CARE®



AC Serie NOBEL REPLACE® SELECT

[ϕ 3.5 / ϕ 4.3 / ϕ 5.0]

ANALOG

Platform	Reference
ϕ 3.5	IPD/AC-AN-00
ϕ 4.3	IPD/AC-AR-00
ϕ 5.0	IPD/AC-AW-00



AD Serie NOBEL ACTIVE®

[ϕ 3.0 / ϕ 3.5 / ϕ 4.3]

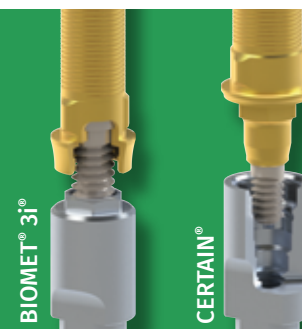
ANALOG

Platform	Reference
ϕ 3.0	IPD/AD-AT-00
ϕ 3.5	IPD/AD-AN-00
ϕ 4.3	IPD/AD-AR-00



Compatibility

BIOMET® 3i®



BA Serie OSSEOTITE®

[ϕ 3.5 / ϕ 4.1 / ϕ 5.0]

ANALOG

Platform	Reference
ϕ 3.4	IPD/BA-AN-00
ϕ 4.1	IPD/AA-AR-00
ϕ 5.0	IPD/BA-AW-00



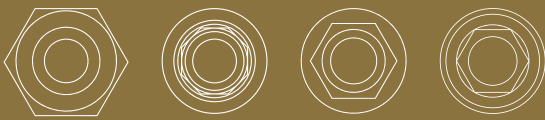
BB Serie CERTAIN®

[ϕ 3.4 / ϕ 4.1 / ϕ 5.0]

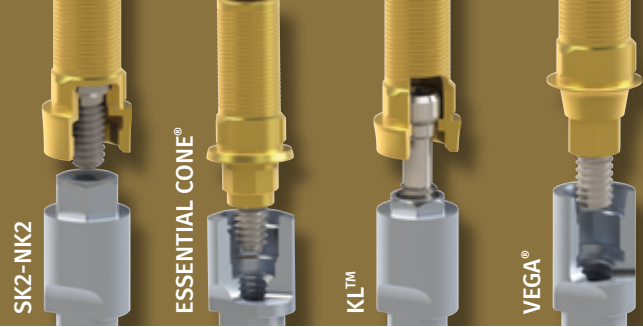
ANALOG

Platform	Reference
ϕ 3.4	IPD/BB-AN-00
ϕ 4.1	IPD/BB-AR-00
ϕ 5.0	IPD/BB-AW-00





Compatibility KLOCKNER®



CA Serie SK2-NK2

[ϕ 4.2]

ANALOG

Platform	Reference
ϕ 4.2	IPD/CA-AR-00



CB Serie ESSENTIAL CONE®

[ϕ 4.5]

ANALOG

Platform	Reference
ϕ 4.5	IPD/CB-AR-00



CC Serie KL™

[ϕ 3.5 / ϕ 4.1 / ϕ 5.1]

ANALOG

Platform	Reference
ϕ 3.5	IPD/AA-AN-00
ϕ 4.1	IPD/AA-AR-00
ϕ 5.1	IPD/AA-AW-00



CD Serie VEGA®

[ϕ 3.5 / ϕ 4.0 / ϕ 4.5]

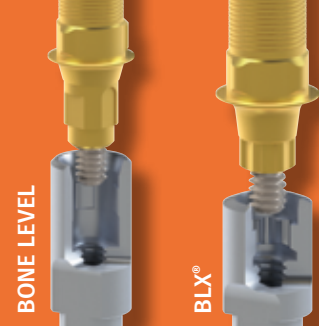
ANALOG

Platform	Reference
ϕ 3.5	IPD/CD-AN-00
ϕ 4.0 ϕ 4.5	IPD/CD-AR-00





Compatibility STRAUMANN®



DB Serie BONE LEVEL

[ϕ 3.3 NC / ϕ 4.1 RC]

ANALOG / DIGITAL ANALOG

Platform	Reference
ϕ 3.3 NC	IPD/DB-AN-00
ϕ 4.1 RC	IPD/DB-AR-00

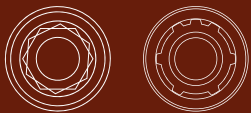


DC Serie BLX®

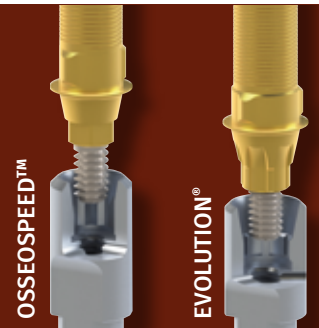
[RB / WB]

ANALOG

Platform	Reference
RB	IPD/DC-AR-00



Compatibility ASTRA®



EA Serie OSSEOSPEED™

[ϕ 3.0 / ϕ 3.5-4.0 / ϕ 4.5-5.0]

ANALOG

Platform	Reference
ϕ 3.0	IPD/EA-AN-00
ϕ 3.5-4.0	IPD/EA-AR-00
ϕ 4.5-5.0	IPD/EA-AW-00
ϕ 3.5-4.0 / ϕ 4.5-5.0	IPD/EA-AR-01
RP - Compatible Galimplant® & etk Naturactis®	IPD/EA-AR-02

IPD/EA-AR-01 is an analog for 20° UniAbutment.



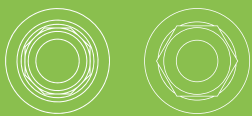
EB Serie EVOLUTION®

[ϕ 3.6 / ϕ 4.2]

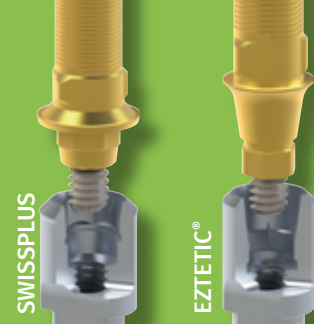
ANALOG / DIGITAL ANALOG

Platform	Reference
ϕ 3.6	IPD/EB-AN-00
ϕ 4.2	IPD/EB-AR-00





Compatibility ZIMMER®



FB Serie SWISSPLUS

[ϕ 4.8]

ANALOG

Platform	Reference
ϕ 4.8	IPD/DA-AR-00



FC Serie EZTETIC®

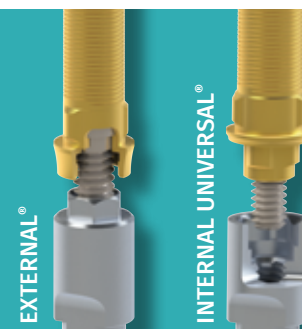
[ϕ 3.1]

ANALOG

Platform	Reference
ϕ 3.1	IPD/FC-AT-00



Compatibility BTI®



GA Serie EXTERNAL

[ϕ 3.5 / ϕ 4.1 / ϕ 5.5]

ANALOG

Platform	Reference
ϕ 3.5 Tiny®	IPD/GA-AN-00
ϕ 4.1	IPD/AA-AR-00
ϕ 5.5	IPD/GA-AW-00



GB Serie INTERNAL UNIVERSAL®

[Universal® ϕ 4.1 / Wide ϕ 5.5]

ANALOG

Platform	Reference
ϕ 4.1	IPD/GB-AR-00
ϕ 5.5	IPD/GB-AW-00





Compatibility BTI®



GC Serie MULTI-IM®

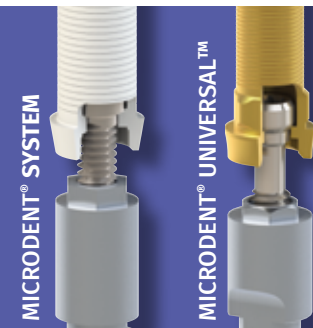
[ϕ 4.1]

ANALOG

Platform	Reference
ϕ 4.1	IPD/GC-AR-00



Compatibility MICRODENT®



HA Serie MICRODENT® SYSTEM

[ϕ 3.5 / ϕ 4.2 / ϕ 5.1]

ANALOG

Platform	Reference
ϕ 3.5	IPD/HA-AN-00
ϕ 4.2	IPD/HA-AR-00
ϕ 5.1	IPD/HA-AW-00



HB Serie MICRODENT® UNIVERSAL™

[ϕ 3.5 / ϕ 4.1 / ϕ 5.1]

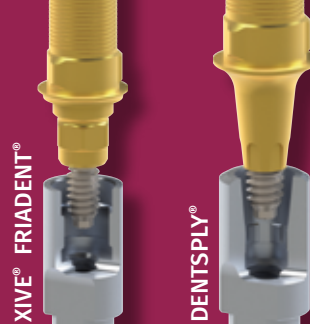
ANALOG

Platform	Reference
ϕ 3.5	IPD/HA-AN-00
ϕ 4.1	IPD/AA-AR-00
ϕ 5.1	IPD/BA-AW-00





Compatibility DENTSPLY®



IA Serie XIVE® FRIADENT®

[ϕ 3.4 / ϕ 3.8 / ϕ 4.5]

ANALOG

Platform	Reference
ϕ 3.4	IPD/IA-AN-00
ϕ 3.8	IPD/IA-AR-00
ϕ 4.5	IPD/IA-AW-00



IB Serie ANKYLOS®

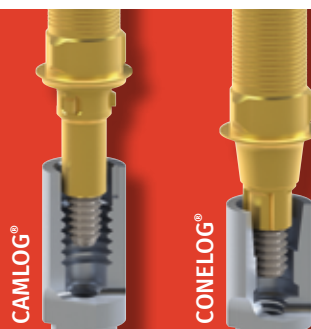
[C/X]

ANALOG

Platform	Reference
C/X	IPD/IB-AR-00



Compatibility CAMLOG®



JA Serie CAMLOG®

[ϕ 3.3 / ϕ 3.8 / ϕ 4.3]

ANALOG

Platform	Reference
ϕ 3.3	IPD/JA-AN-00
ϕ 3.8	IPD/JA-AR-00
ϕ 4.3	IPD/JA-AW-00



JA Serie CONELOG®

[ϕ 3.3 / ϕ 3.8 / ϕ 4.3]

ANALOG

Platform	Reference
ϕ 3.3	IPD/JB-AT-00
ϕ 3.8	IPD/JB-AN-00
ϕ 4.3	IPD/JB-AR-00





Compatibility BIOHORIZONS®



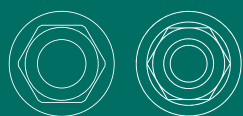
TAPERED INTERNAL

LB Serie TAPERED INTERNAL

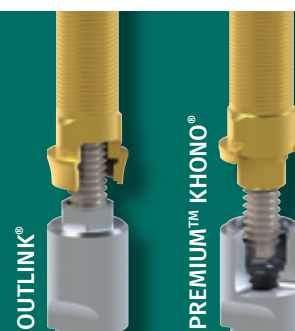
[ϕ 3.0 / ϕ 3.5 / ϕ 4.5 / ϕ 5.7]

ANALOG / DIGITAL ANALOG

Platform	Reference
ϕ 3.0	IPD/LB-AT-00
ϕ 3.5	IPD/LB-AN-00
ϕ 4.5	IPD/LB-AR-00
ϕ 5.7	IPD/LB-AW-00



Compatibility SWEDEN & MARTINA®



MA Serie OUTLINK®

[ϕ 3.3 / ϕ 4.1 / ϕ 5.0]

ANALOG

Platform	Reference
ϕ 3.3	IPD/MA-AN-00
ϕ 4.1	IPD/AA-AR-00
ϕ 5.0	IPD/BA-AW-00



MB Serie PREMIUM™ KHONO®

[ϕ 3.3 / ϕ 3.8 / ϕ 4.25 / ϕ 5.0]

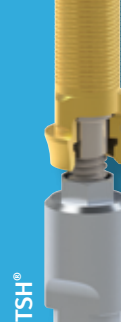
ANALOG

Platform	Reference
ϕ 3.3	IPD/MB-AT-00
ϕ 3.8	IPD/MB-AN-00
ϕ 4.25	IPD/MB-AR-00
ϕ 5.0	IPD/MB-AW-00





Compatibility PHIBO®



NA Serie TSH®

[S2 / S3-4 / S5]

ANALOG

Platform	Reference
S2	IPD/NA-AN-00
S3-S4	IPD/AA-AR-00
S5	IPD/HA-AW-00



Compatibility OSSTEM IMPLANT® (HIOSSEN)



MA Serie TSIII

[ϕ 3.5 / ϕ 4.0]

ANALOG

Platform	Reference
ϕ 3.5	IPD/OB-AN-00
ϕ 4.0	IPD/OB-AR-00





Compatibility BIOTECH[®] DENTAL



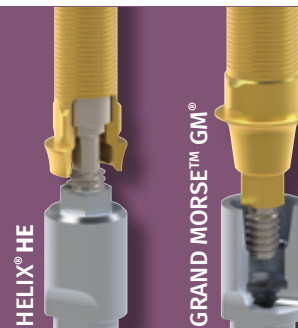
QB Serie KONTACT[®] [RP]

ANALOG

Platform	Reference
RP	IPD/QB-AR-00



Compatibility NEODENT[®]



RA Serie HELIX[®] HE [ϕ 3.3 / ϕ 4.1 / ϕ 5.0]

ANALOG

Platform	Reference
ϕ 3.3	IPD/RA-AN-00
ϕ 4.1	IPD/AA-AR-00
ϕ 5.0	IPD/RA-AW-00



RB Serie GRAND MORSE™ GM [GM]

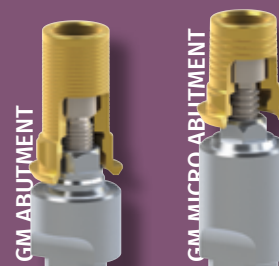
ANALOG

Platform	Reference
GM	IPD/RB-AR-00





Compatibility NEODENT®



RC Serie GM ABUTMENT

[RP]

ANALOG

Platform

RP

Reference

IPD/RC-AR-00



RD Serie GM MICRO ABUTMENT

[ϕ 3.5]

ANALOG

Platform

ϕ 3.5

Reference

IPD/RD-AN-00



Compatibility BEGO® SEMADOS®



SB Serie SC/RS

[ϕ 3.25 / ϕ 3.75 / ϕ 4.1 / ϕ 4.5]

ANALOG

Platform

ϕ 3.5

ϕ 4.0

Reference

IPD/OB-AN-00

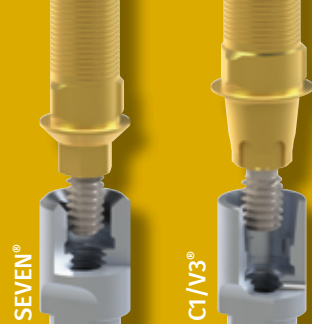
IPD/OB-AR-00





Compatibility

MIS[®]



TA Serie SEVEN[®]

[Narrow 3.3 / Standard / Wide]

ANALOG

Platform	Reference
Narrow 3.3	IPD/TA-AT-00
Standard	IPD/FA-AN-00
Wide	IPD/FA-AR-00

TB Serie C1/V3[®]

[Standard]

ANALOG

Platform	Reference
Standard	IPD/TB-AR-00



Compatibility

DIO[®]



UB Serie UFII[®]

[NP / RP]

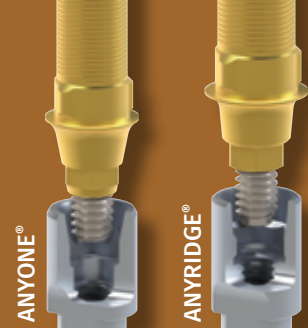
ANALOG

Platform	Reference
NP	IPD/UB-AN-00
RP	IPD/UB-AR-00





Compatibility MEGAGEN®



WA Serie ANYONE® [RP]

ANALOG

Platform

RP

Reference

IPD/WA-AR-00



WB Serie ANYRIDGE® [φ4.0]

ANALOG

Platform

φ4.0

Reference

IPD/WB-AR-00



Compatibility DENTIUM®

IMPLANTIUM® / SUPERLINE™



XA Serie IMPLANTIUM® / SUPERLINE™ [RP]

ANALOG

Platform

RP

Reference

IPD/XA-AR-00





Compatibility MEDENTIS®



YB Serie ICX

[RP]

ANALOG

Platform

RP

Reference

IPD/YB-AR-00



Compatibility GLOBAL D®



1A Serie IN-KONE®

[RP]

ANALOG

Platform

RP

Reference

IPD/1A-AR-00



Compatibility ANTHOGRYR®



2A Serie AXIOME® BL

[RP]

ANALOG / DIGITAL ANALOG

Platform

RP

Reference

IPD/2A-AR-00

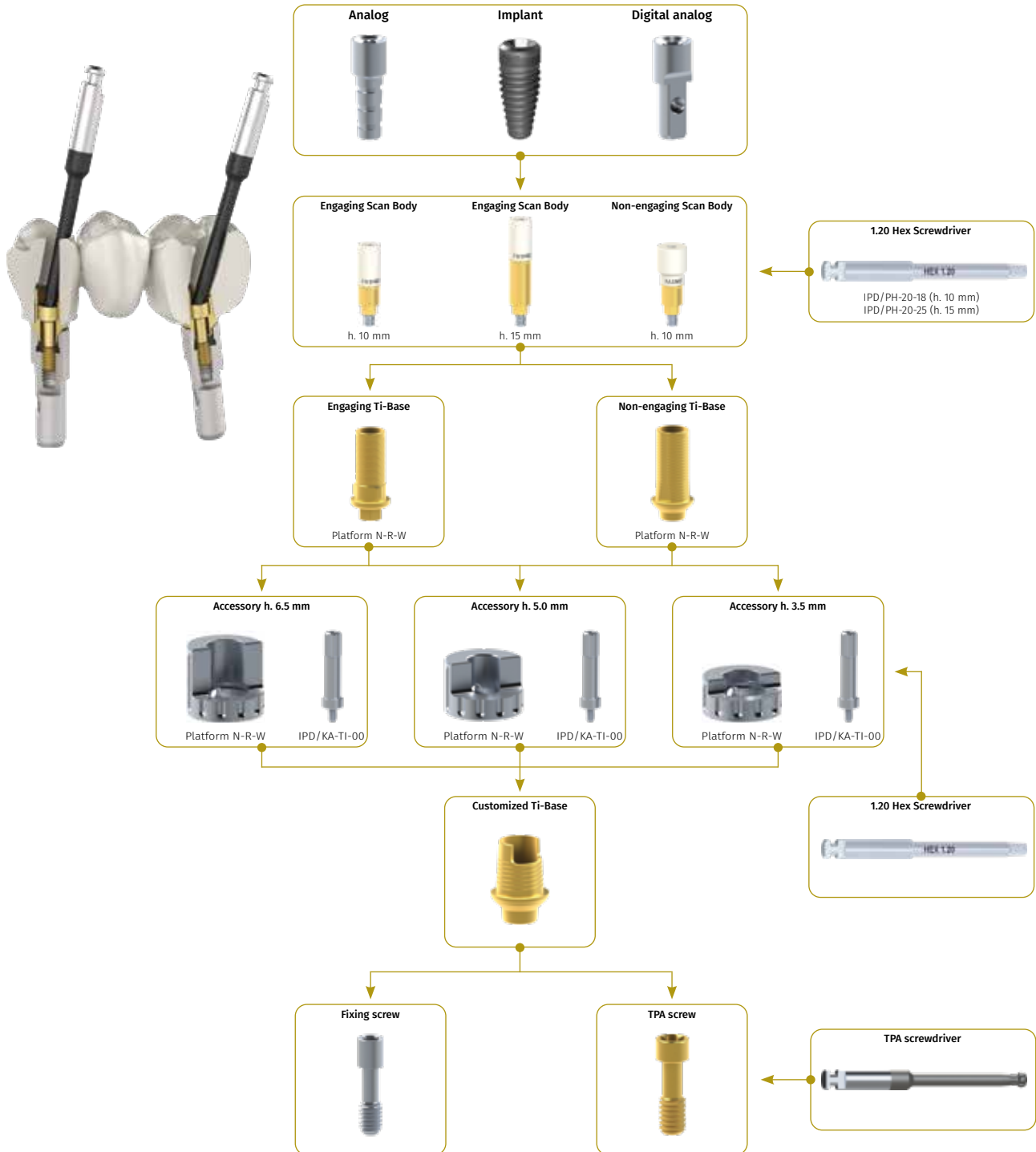


Working Systems

-  Custom Interface System®
- MULTI-UNIT SYSTEM
- ACCESSORIES
- TECHNICAL SPECIFICATIONS



WORKFLOW DIAGRAM



CUTTING GUIDE

Engaging

Platform	Height (mm)	Reference
Narrow	3.5	IPD/KA-IN-35
	5.0	IPD/KA-IN-50
	6.5	IPD/KA-IN-65
Standard	3.5	IPD/KA-IR-35
	5.0	IPD/KA-IR-50
	6.5	IPD/KA-IR-65
Wide	3.5	IPD/KA-IW-35
	5.0	IPD/KA-IW-50
	6.5	IPD/KA-IW-65

Version with agulation window subject to availability.



NON-ENGAGING

Platform	Height (mm)	Reference
Narrow	3.5	IPD/KR-IN-35
	5.0	IPD/KR-IN-50
	6.5	IPD/KR-IN-65
Standard	3.5	IPD/KR-IR-35
	5.0	IPD/KR-IR-50
	6.5	IPD/KR-IR-65
Wide	3.5	IPD/KR-IW-35
	5.0	IPD/KR-IW-50
	6.5	IPD/KR-IW-65

Version with agulation window subject to availability.





FIXING SCREW

	Screwdriver	Reference
Every cutting guide	1.20 Hex	IPD/KA-TI-00



CUTTING GUIDE KITS

Platform	Heights (mm)		
Narrow	3.5 / 5.0 / 6.5	IPD/KT-IN-00	IPD/KT-IN-01
Standard	3.5 / 5.0 / 6.5	IPD/KT-IR-00	IPD/KT-IR-01
Wide	3.5 / 5.0 / 6.5	IPD/KT-IW-00	IPD/KT-IW-01

All kits include the locking screw IPD/KA-TI-00



SCAN BODY SCREWDRIVER

Scan Body height (mm)	Reference
10	IPD/PH-20-18
15	IPD/PH-20-25

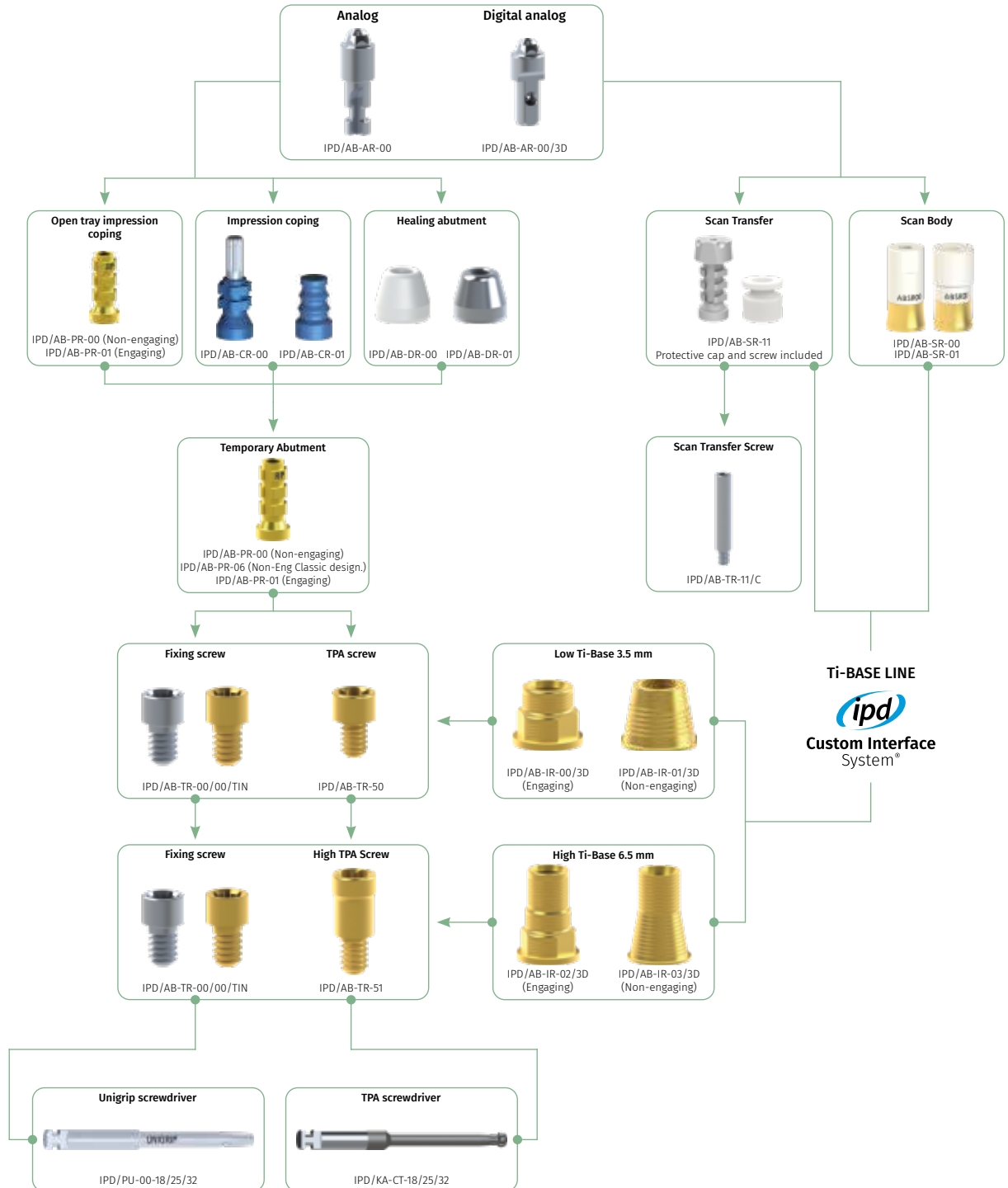


Compatibility	Platform	Connection	GH (mm)	Reference	Cutting guides
Nobel Biocare® Branemark System®	Ø3.5	Engaging	1.5	IPD/AA-IN-02/3D	IPD/KT-IN-00
			0.5	IPD/AA-IR-01/3D	
Nobel Biocare® Branemark System®	Ø4.1	Engaging	2.5	IPD/AA-IR-04/3D	IPD/KT-IN-01
			0.5	IPD/AA-IR-01/3D	IPD/KT-IR-01
Nobel Biocare® Branemark System®	Ø5.1	Engaging	1.3	IPD/AA-IW-02/3D	IPD/KT-IW-00
			Non-engaging	IPD/AA-IW-03/3D	-
Nobel Biocare® Multi-unit System	Ø4.8	Non-engaging	0.2	IPD/AB-IR-01/3D	-
			0.2	IPD/AB-IR-03/3D	-
Nobel Biocare® Nobel Active®	Ø3.0	Non-engaging	0.8	IPD/AD-IT-00/3D	
			1.5	IPD/AD-IT-02/3D	IPD/KT-IN-00
			2.5	IPD/AD-IT-04/3D	
		Engaging	0.8	IPD/AD-IT-01/3D	
			1.5	IPD/AD-IT-03/3D	IPD/KT-IN-01
			2.5	IPD/AD-IT-05/3D	
	Ø3.5	Non-engaging	0.5	IPD/AD-IN-00/3D	
			1.5	IPD/AD-IN-02/3D	IPD/KT-IN-00
			2.5	IPD/AD-IN-04/3D	
		Engaging	0.5	IPD/AD-IN-01/3D	
			1.5	IPD/AD-IN-03/3D	IPD/KT-IN-01
			2.5	IPD/AD-IN-05/3D	
Ø4.3	Non-engaging	0.5	IPD/AD-IR-00/3D		
		1.5	IPD/AD-IR-02/3D	IPD/KT-IR-00	
Zimmer® Screw Vent®	Ø3.5	Engaging	0.5	IPD/FA-IN-00/3D	
			1.5	IPD/FA-IN-02/3D	IPD/KT-IN-00
			2.5	IPD/FA-IN-04/3D	
		Non-engaging	0.5	IPD/FA-IN-01/3D	
			1.5	IPD/FA-IN-03/3D	IPD/KT-IN-01
			2.5	IPD/FA-IN-05/3D	
	Ø4.5	Engaging	0.5	IPD/FA-IR-00/3D	
			1.5	IPD/FA-IR-02/3D	IPD/KT-IR-00
			2.5	IPD/FA-IR-04/3D	
		Non-engaging	0.5	IPD/FA-IR-01/3D	
			1.5	IPD/FA-IR-03/3D	IPD/KT-IR-01
			2.5	IPD/FA-IR-05/3D	
Ø5.7	Engaging	0.5	IPD/FA-IW-00/3D	IPD/KT-IW-00	
		Non-engaging	0.5	IPD/FA-IW-01/3D	IPD/KT-IW-01
Neodent® Grand Morse™ GM	GM	Antirrotativa	1.0	IPD/RB-IR-00/3D	
			2.0	IPD/RB-IR-02/3D	IPD/KT-IR-00
			3.0	IPD/RB-IR-04/3D	
			4.0	IPD/RB-IR-06/3D	
		Rotativa	1.0	IPD/RB-IR-01/3D	
			2.0	IPD/RB-IR-03/3D	IPD/KT-IR-01
			3.0	IPD/RB-IR-05/3D	
			4.0	IPD/RB-IR-07/3D	


Compatibility	Platform	Connection	GH (mm)	Reference	Cutting guides	
Straumann® Bone Level	Ø3.3 NC	Antirrotativa	0.5	IPD/DB-IN-00/3D	IPD/KT-IN-00	
			1.5	IPD/DB-IN-02/3D		
			2.5	IPD/DB-IN-04/3D		
		Rotativa	3.5	IPD/DB-IN-06/3D		
			0.5	IPD/DB-IN-01/3D		IPD/KT-IN-01
			1.5	IPD/DB-IN-03/3D		
	2.5	IPD/DB-IN-05/3D				
	Ø4.1 RC	Antirrotativa	3.5	IPD/DB-IN-07/3D	IPD/KT-IR-00	
			Rotativa	0.5		IPD/DB-IR-00/3D
				1.5		IPD/DB-IR-02/3D
				2.5		IPD/DB-IR-04/3D
		3.5		IPD/DB-IR-06/3D		
		Rotativa	0.5	IPD/DB-IR-01/3D		IPD/KT-IR-01
			1.5	IPD/DB-IR-03/3D		
2.5			IPD/DB-IR-05/3D			
3.5	IPD/DB-IR-07/3D					
Straumann® Tissue Level	Ø4.8	Engaging	0.4	IPD/DA-IR-00/3D	IPD/KT-IR-00	
		Non-engaging		IPD/DA-IR-01/3D	IPD/KT-IR-01	
	Ø6.5	Engaging		IPD/DA-IW-02/3D	IPD/KT-IW-00	
		Non-engaging		IPD/DA-IW-03/3D	IPD/KT-IW-01	

WORKING SYSTEMS Multi-unit System

WORKFLOW DIAGRAM




INTRA-ORAL / DESKTOP / CONTACT PROBE SCAN BODY

Platform	Height (mm)	
ø4.8	10.0	IPD/AB-SR-01

Captive screw included. 1.20 Hex Screwdriver.




SCAN TRANSFER


Platform	Height (mm)		Screw
ø4.8	0.5	IPD/AB-SR-11	IPD/AB-TR-11/C

IPD/AB-SR-11 includes screw and a protective cap.



Ti-BASE

Platform	Post height (mm)	Gingival height	
ø4.8	3.5	0.5	-
		0.2	IPD/AB-IR-01/3D
	6.5	0.5	-
		0.2	IPD/AB-IR-03/3D

Please see page 150 for the  Custom Interface System® accessories.
IPD/AB-IR-01 is a  Hollow Screw System® Ti-Base.



SCREW / TPA SCREW FOR ANGLED PROSTHESIS

Platform	Screwdriver	Height	Reference	TiN Reference
ø4.8	Unigrip		IPD/AB-TR-00	IPD/AB-TR-00/TIN
	TPA	For 3.5 mm high Ti-Base	-	IPD/AB-TR-50
	TPA	For 6.5 mm high Ti-Base	-	IPD/AB-TR-51




ANALOG / DIGITAL ANALOG

Platform	Reference	Digital reference
ø4.8	IPD/AB-AR-00	IPD/AB-AR-00/3D
Bottom Screw	-	IPD/KA-TA-00
Side Screw	-	IPD/KA-TA-01



TEMPORARY ABUTMENT / OPEN TRAY COPING

Platform			Coping screw
ø4.8	IPD/AB-PR-01	IPD/AB-PR-00	IPD/AB-TR-00/C
	-	IPD/AB-PR-06	-

The same abutment can be used as a temporary abutment with the occlusal screw or as an impression coping using the coping screw.

IPD/AB-PR-06 corresponds to the Classic design, and cannot be used as a coping.



WORKING SYSTEMS

Multi-unit System

OPEN AND CLOSED TRAY COPING

Platform		Reference
ø4.8	Open tray coping	IPD/AB-CR-00
	Closed tray coping	IPD/AB-CR-01

Classic design.



HEALING ABUTMENT

Titanium / Plastic POM

Platform	Material	Reference
ø4.8	Plastic POM	IPD/AB-DR-00
	Titanium	IPD/AB-DR-01

IPD/AB-TR-00 screw not included.



ANGLED MULTI-UNIT CARRIER

Platform	Reference
ø4.8	IPD/LL-TM-00



UNGRIP SCREWDRIVER

Lengths (mm)	Reference
18	IPD/PU-00-18
25	IPD/PU-00-25
32	IPD/PU-00-32



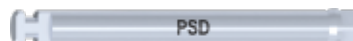
STRAIGHT MULTI-UNIT SCREWDRIVER

Longitud (mm)	Reference
20	IPD/LL-AB-00



PSD SCREWDRIVER

Description	Reference
	IPD/LL-PS-00



PSD TOOL

Description	Reference
PSD Screwdriver + insert extractor tool	IPD/LL-PS-01



1.00 HEX SCREWDRIVER

Lengths (mm)	Reference
18	IPD/PH-00-18
25	IPD/PH-00-25
32	IPD/PH-00-32



1.18 HEX SCREWDRIVER

Lengths (mm)	Reference
18	IPD/PH-18-18
25	IPD/PH-18-25
32	IPD/PH-18-32



1.20 HEX SCREWDRIVER

Lengths (mm)	Reference
18	IPD/PH-20-18
25	IPD/PH-20-25
32	IPD/PH-20-32



1.25 HEX SCREWDRIVER

Lengths (mm)	Reference
18	IPD/PH-25-18
25	IPD/PH-25-25
32	IPD/PH-25-32



1.27 HEX SCREWDRIVER

Lengths (mm)	Reference
18	IPD/PH-27-18
25	IPD/PH-27-25
32	IPD/PH-27-32



1.40 HEX SCREWDRIVER

Lengths (mm)	Reference
18	IPD/PH-40-18
25	IPD/PH-40-25
32	IPD/PH-40-32



1.70 HEX SCREWDRIVER

Lengths (mm)	Reference
18	IPD/PH-70-18
25	IPD/PH-70-25
32	IPD/PH-70-32



Accessories

1.25 SQUARE SCREWDRIVER

Lengths (mm)	Reference
18	IPD/PC-25-18
25	IPD/PC-25-25
32	IPD/PC-25-32



STAR SCREWDRIVER (Klockner Essential® / Vega®)

Lengths (mm)	Reference
18	IPD/PS-00-18
25	IPD/PS-00-25
32	IPD/PS-00-32



UNIGRIP SCREWDRIVER

Lengths (mm)	Reference
18	IPD/PU-00-18
25	IPD/PU-00-25
32	IPD/PU-00-32



NEO GM SCREWDRIVER

Lengths (mm)	Reference
18	IPD/PU-01-18
25	IPD/PU-01-25
32	IPD/PU-01-32



FLAT SCREWDRIVER

Lengths (mm)	Reference
18	IPD/PP-00-18
25	IPD/PP-00-25
32	IPD/PP-00-32



TORX SCREWDRIVER

Lengths (mm)	Reference
18	IPD/PT-00-18
25	IPD/PT-00-25
32	IPD/PT-00-32



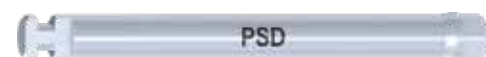
MULTI-UNIT SCREWDRIVER

Lengths (mm)	Reference
20	IPD/LL-AB-00



PSD SCREWDRIVER

Lengths (mm)	Reference
25	IPD/LL-PS-00



PSD AND INSERT EXTRACTOR TOOL

Reference

IPD/LL-PS-01



HOLLOW SCREWDRIVER

Lengths (mm)

26

Reference

IPD/KA-CI-09



TPA SCREWDRIVER

Lengths (mm)

18

25

32

Reference

IPD/KA-CT-18

IPD/KA-CT-25

IPD/KA-CT-32



CLINICAL RA SHANK HANDLE

Lengths (mm)

16

Reference

IPD/MC-00-16



LABORATORY RA SHANK HANDLE

Lengths (mm)

70

Reference

IPD/ML-00-70



RA SHANK RATCHET

Lengths (mm)

90

Reference

IPD/DI-00-90

Ratchet adapter included.



RATCHET ADAPTER

Lengths (mm)

Ratchet adapter

Reference

IPD/DI-KA-90



Accessories kits

Reference

Description	Reference	
	IPD/KT-DI-18	IPD/KT-DI-25
	Lengths	
1.20 Hex Screwdriver	18 mm	25 mm
1.25 Hex Screwdriver	18 mm	25 mm
1.27 Hex Screwdriver	18 mm	25 mm
1.70 Hex Screwdriver	18 mm	25 mm
1.25 Square screwdriver	18 mm	25 mm
Unigrip screwdriver	18 mm	25 mm
Flat screwdriver	18 mm	25 mm
TPA screwdriver	18 mm	25 mm
Torx screwdriver	18 mm	25 mm
Multi-unit screwdriver	20 mm	20 mm
RA Shank Ratchet	90 mm	90 mm



Reference

Description	Reference	
	IPD/KT-MC-18	IPD/KT-MC-25
	Lengths	
1.20 Hex Screwdriver	18 mm	25 mm
1.25 Hex Screwdriver	18 mm	25 mm
1.27 Hex Screwdriver	18 mm	25 mm
1.70 Hex Screwdriver	18 mm	25 mm
1.25 Square screwdriver	18 mm	25 mm
Unigrip screwdriver	18 mm	25 mm
Flat screwdriver	18 mm	25 mm
TPA screwdriver	18 mm	25 mm
Torx screwdriver	18 mm	25 mm
Multi-unit screwdriver	20 mm	20 mm
Clinical RA Shank Handle	16 mm	16 mm



Reference

Description	Reference	
	IPD/KT-ML-32	
	Lengths	
1.20 Hex Screwdriver	32 mm	
1.25 Hex Screwdriver	32 mm	
1.27 Hex Screwdriver	32 mm	
1.70 Hex Screwdriver	32 mm	
1.25 Square screwdriver	32 mm	
Unigrip screwdriver	32 mm	
Flat screwdriver	32 mm	
TPA screwdriver	32 mm	
Torx screwdriver	32 mm	
Laboratory RA Shank Handle	70 mm	




TPA screw technical specifications

DESCRIPTION				CHARACTERISTIC							
REFERENCE	TiN Reference	COMPATIBILITY	PLATFORM	SEAT	HEAD DIAMETER	METRIC	HEAD (L1)	BODY (L2)	TOTAL (LT)	SCREW-DRIVER	TORQUE (NCM)
IPD/AA-TN-00	IPD/AA-TN-00/TIN	Nobel Biocare® Branemark System®	Ø3.5	70°	2.25	M1.6x0.35	2.15	5.15	7.30	Unigrip	35
IPD/AA-TR-00	IPD/AA-TR-00/TIN	Nobel Biocare® Branemark System®	Ø4.1	75°	2.4	M2x0.4	1.5	5.85	7.35	Unigrip	35
IPD/AA-TR-02	IPD/AA-TR-02/TIN	Nobel Biocare® Branemark System®	Ø4.1	Flat	2.40	M2x0.4	1.45	5.9	7.35	Unigrip	35
IPD/AA-TW-00	IPD/AA-TW-00/TIN	Nobel Biocare® Branemark System®	Ø5.1	72°	3.40	M2.5x0.45	1.37	5.33	6.7	Unigrip	35
IPD/AA-TN-00	IPD/AA-TN-00/TIN	Nobel Biocare® Nobel Active®	Ø3.5	70°	2.25	M1.6x0.35	2.15	5.15	7.30	Unigrip	35
IPD/AA-TR-00	IPD/AA-TR-00/TIN	Nobel Biocare® Nobel Active®	Ø4.3	75°	2.4	M2x0.4	1.5	5.85	7.35	Unigrip	35
IPD/AA-TR-02	IPD/AA-TR-02/TIN	Nobel Biocare® Nobel Active®	Ø4.3	Flat	2.40	M2x0.4	1.45	5.9	7.35	Unigrip	35
IPD/AD-TT-00	IPD/AD-TT-00/TIN	Nobel Biocare® Nobel Active®	Ø3.0	70°	1.82	M1.4x0.3	1.86	4.84	6.7	Unigrip	15
IPD/AB-TR-00	IPD/AB-TR-00/TIN	Multi-unit	Ø4.8	Flat	2.00	M1.4x0.3	1.35	2.1	3.45	Unigrip	15
IPD/DA-TR-00	IPD/DA-TR-00/TIN	Straumann® Tissue Level (synOcta® level)	Ø4.8	90°	2.4	M2x0.4	1.2	3.3	4.5	Torx	35
IPD/DA-TR-01	IPD/DA-TR-01/TIN	Straumann® Tissue Level (Implant level)	Ø4.8 / Ø6.5	30°	2.4	M2x0.4	3.03	3.67	6.7	Torx	35
IPD/DA-TR-02	-	Straumann® Tissue Level	Ø4.8	Flat	2.52	M2x0.4	1.45	5.9	7.35	Torx	35
IPD/DA-TR-03	IPD/DA-TR-03/TIN	Straumann® Tissue Level	Ø4.8	30°	2.57	M2x0.4	3.05	3.65	6.7	Torx	35
IPD/DB-TR-00	IPD/DB-TR-00/TIN	Straumann® Bone Level	Ø3.3 / Ø4.1	30°	2.1	M1.6x0.35	2.31	5.54	7.85	Torx	35
IPD/FA-TR-00	IPD/FA-TR-00/TIN	Zimmer® Screw Vent®	Ø3.5 / Ø4.5 / Ø5.7	140°	2.1	M1.8x0.35	2.54	5.66	8.2	1.25 Hex	30
IPD/RB-TR-00	IPD/RB-TR-00/TIN	Neodent® Grand Morse™ GM	RP	60°	1.86	M1.6x0.35	1.84	7.93	9.77	Neo GM	20
IPD/RC-TR-00	IPD/RC-TR-00/TIN	Neodent® GM abutment	Ø4.8	90°	2.35	M2x0.25	1.53	2.25	3.78	Neo GM	10
IPD/RD-TN-00	IPD/RD-TN-00/TIN	Neodent® GM micro abutment	Ø3.5	Flat	1.90	M1.4x0.3	1.72	1.99	3.71	Neo GM	10
IPD/XA-TR-02	-	Nobel Biocare® Nobel Active®	Ø4.3	Flat	2.52	M2x0.4	1.45	5.9	7.35	1.20 Hex	30

TPA screw technical specifications

DESCRIPTION			CHARCATERISTIC							
REFERENCE	COMPATIBILITY	PLATFORM	SEAT	HEAD DIAMETER	METRIC	HEAD (L1)	BODY (L2)	TOTAL (LT)	SCREW-DRIVER	TORQUE (NCM)
IPD/AA-TN-50	Nobel Biocare® Branemark System®	Ø3.5	70°	2.3	M1.6x0.35	2.08	4.72	6.8	TPA	20
IPD/AA-TR-50	Nobel Biocare® Branemark System®	Ø4.1	75°	2.3	M2x0.4	1.93	3.87	5.8	TPA	25
IPD/AA-TR-52	Nobel Biocare® Branemark System®	Ø4.1	Flat	2.3	M2x0.4	1.4	4.4	5.8	TPA	25
IPD/AA-TW-50	Nobel Biocare® Branemark System®	Ø5.1	72°	2.85	M2.5x0.45	1.61	4.8	6.41	TPA	25
IPD/AA-TN-50	Nobel Biocare® Nobel Active®	Ø3.5	70°	2.3	M1.6x0.35	2.08	4.72	6.8	TPA	20
IPD/AD-TR-50	Nobel Biocare® Nobel Active®	Ø4.3	75°	2.3	M2x0.4	2.0	5.0	7	TPA	25
IPD/AD-TT-50	Nobel Biocare® Nobel Active®	Ø3.0	70°	2.3	M1.4x0.3	2.0	4.65	6.65	TPA	15
IPD/AB-TR-50	Multi-unit / Multi-im®	Ø4.8	Flat	2.3	M1.4x0.3	1.5	2.1	3.6	TPA	15
IPD/AB-TR-51	Multi-unit	Ø4.8	Flat	2.25	M1.4X0.3	3.25	2.10	5.35	TPA	15
IPD/DA-TR-50	Straumann® Tissue Level (Sobre synOcta®)	Ø4.8 / Ø6.0	90°	2.3	M2x0.4	1.65	3.32	4.97	TPA	25
IPD/DA-TR-51	Straumann® Tissue Level (Implant level)	Ø4.8 / Ø6.0	30°	2.3	M2x0.4	2.65	3.65	6.3	TPA	25
IPD/DB-TR-50	Straumann® Bone Level	Ø3.3 / Ø4.1	30°	2.3	M1.6x0.35	2.15	5.55	7.7	TPA	20
IPD/RB-TR-50	Neodent® Grand Morse™ GM	GM	60°	2.3	M1.6x0.35	1.98	7.52	9.50	TPA	20
IPD/RC-TR-50	Neodent® GM abutment	Ø4.8	90°	2.35	M2x0.25	1.60	2.23	3.83	TPA	10
IPD/RD-TN-50	Neodent® GM micro abutment	Ø3.5	Flat	2.25	M1.4x0.3	1.40	1.99	3.99	TPA	10





Now you have seen our
complete range of products,
be part of *ipd*.

www.ipd2004.com







US Office

1330 SW 22nd Street, Suite 200
Miami, FL 33145

Phone: +1 305 392 1427
burbina@ipd2004.com

Spain Office

C/ Rosa dels Vents, 9-15
08338 Premià de Dalt (Barcelona)

Phone: (+34) 93 278 84 91
info@ipd2004.com
www.ipd2004.com